

LIGHTING FIXTURE SCHEDULE

FIXTURE ID	QUANTITY	LENGTH OF TRACK OR TYPE OF FIXTURE	FIXTURE TYPE	TOTAL WATTAGE OF TRACK OR FIXTURE	TOTAL WATTAGE USED
1-1 TO 1-4	4	(7) X 8'-0" = 56'-0"	LOW-VOLTAGE	(7) X 120W = 840W	(4) X 840W = 3360W
2-1 TO 2-4	4	6'-0"	LOW-VOLTAGE	120W	(4) X 120W = 480W
3-1 TO 3-14	14	N/A	COMPACT FLUORESCENT	18W	(14) X 18W = 252W
					3612 TOTAL WATTS

SHEET NOTES:

- LEGEND
- NEW WALL
WALL TYPE 1: 3 1/2" METAL STUDS
WITH 1 LAYER 5/8" GWB BOTH SIDES
 - NEW WALL
WALL TYPE 2: 3 1/2" METAL STUDS
WITH 1 LAYER 5/8" GWB ONE SIDE ONLY
 - EXISTING CONSTRUCTION TO REMAIN
 - EXISTING CONSTRUCTION TO BE REMOVED
 - EXIT SIGN W/ EMERGENCY LIGHTING
(EXISTING TO REMAIN UNLESS NOTED 'N' FOR NEW)
 - EMERGENCY LIGHTING (BATTERY PACK)
(EXISTING TO REMAIN UNLESS NOTED 'N' FOR NEW)
 - FIRE STROBE
(EXISTING TO REMAIN UNLESS NOTED 'N' FOR NEW)
 - FIRE SEAKER/STROBE
(EXISTING TO REMAIN UNLESS NOTED 'N' FOR NEW)
 - MANUAL PULL STATION
(EXISTING TO REMAIN UNLESS NOTED 'N' FOR NEW)

1	ISSUED FOR PAA	08/01/2012
	RESPONSE TO DOB OBJECTIONS	04/10/2012
	DOB FILING ALT 2 NON-DIR 14	01/30/2012
	DOB FILING OFFICE	01/30/2012
No.	Revision	Date

MECHANICAL CONSULTANT:

STRUCTURAL CONSULTANT:

Howard B. Spivak Architect, P.C.

115 West 30th Street, Suite 901
New York, New York 10001-4060
Tel 212 343-1166 Fax 212 343-0225

PROJECT:

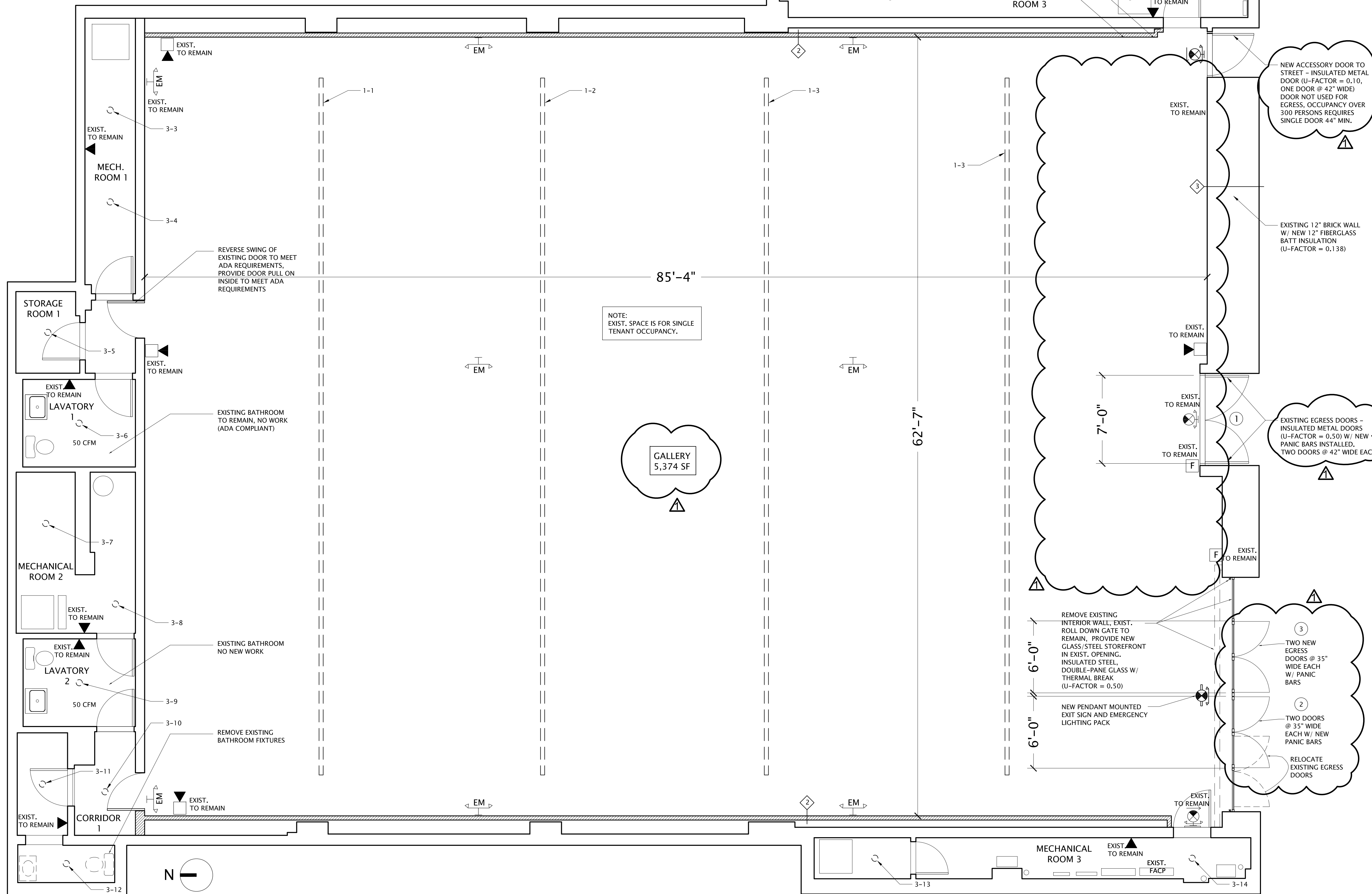
DIA CENTER FOR THE ARTS
545-549 W. 22ND STREET
NEW YORK, NY

DRAWING TITLE:

**GROUND FLOOR
CONSTRUCTION PLAN**

DATE: 2010-05-25
SCALE: 1/4"=1'-0"
JOB NO: 10009
DRAWING NO:

A-100.01



14 GROUND FLOOR CONSTRUCTION PLAN
1/4"=1'-0"